

Aegis Configurator | Central Database

U.S. PATENT NO. 9,720,700

CONFIGURE MULTIPLE AEGIS DEVICES SIMULTANEOUSLY

STORES ALL LOG FILES CONTAINING IMPLEMENTED SETTINGS, USER AND RECOVERY PINS VIA SECURE SSL ON CENTRAL DATABASE AND IS ACCESSIBLE FROM LOCAL WORKSTATIONS

HEIRARCHAL LEVELS OF DATABASE ACCESS CONTROLLED WITHIN ORGANIZATION BY ADMINS AUTOMATICALLY AND QUICKLY SET ADMIN, USER, AND RECOVERY PINS

SECURELY LOAD FILES ONTO DEVICES DURING SETUP PROCESS

DATA-ENCRYPTED SECURE IMPLEMENTATION

CREATE, SAVE, AND REUSE MASTER PROFILES

MANAGE AND EDIT MASTER PROFILES

DEPLOY CONFIGURED DEVICES TO USERS IN FORCED-ENROLLMENT STATE

QUERY DATABASE FOR SPECIFIC DEVICE SETTINGS

WINDOWS 7, 8, AND 10 COMPATIBLE

ADVANCED FEATURE SETTINGS:

- PROGRAMMABLE PIN LENGTHS
- RANDOM PIN GENERATOR
- RECOVERY PINS
- SELF-DESTRUCT PINS
- PROGRAMMABLE NUMBER OF BRUTE FORCE ATTEMPTS
- TWO READ-ONLY MODES
- DEVICE FORMATTING
- LOCK OVERRIDE
- USER FORCED ENROLLMENT



Advanced Feature Sets, Stored Profile Settings, Multiple Drive Setup Capability, and an Intuitive User Interface, Now with Central Database Access for Large Corporate Device Deployments.

Quickly Create Master Profiles, Customize Settings, and Preload Data onto Multiple Apricorn Drives.

Intuitive, simple, and secure. This Windows-based application quickly programs features and PINs into compatible Aegis secure devices. The Configurator will recognize compatible devices and allow Administrators to program/configure/provision all of Apricorn's compatible USB 3.0 and later security devices.

With Central Database access – via on-premise active directory or Azure – various members of an organization's system admin group can access log files within the database for all configured device information. For help desk and support staff, lesser levels of information access and permissions can be granted. Multiple Admin roles can be permitted by geographic or logical divisions within an organization. For example, a departmental Admin would be granted access to the highest level information and permissions within their division such as viewing User and Recovery PINs, editing local profiles and device settings, whereas the Help Desk role is limited to less critical information and permissions like viewing recovery PINs and reporting lost / stolen devices. All of these various user groups and roles are defined within an organization by the Super Admin at initial installation. There is no limit to the number of Admins, Help Desk, and Support Users that can be added.

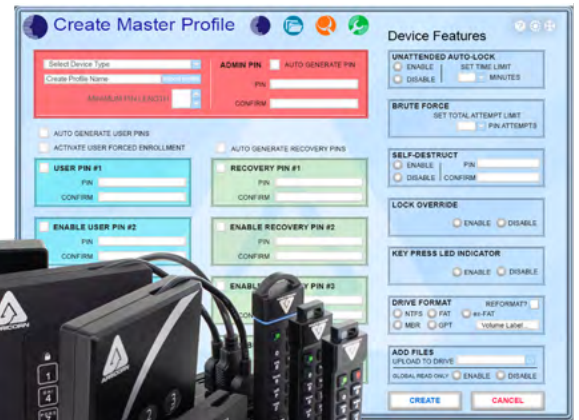
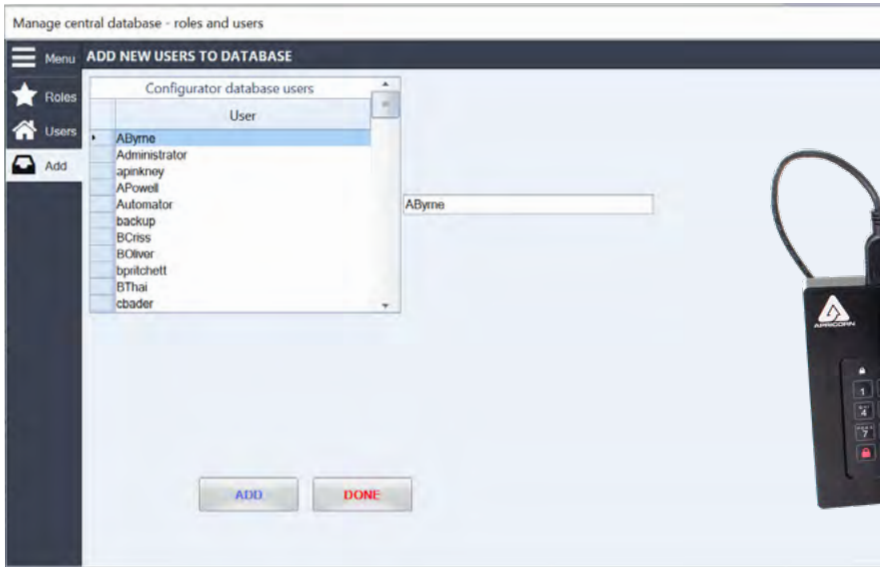
Manage central database - roles and users

Menu	SPECIFIC ROLE PERMISSIONS	Admin	Helpdesk	Support
Roles				
Users				
Add				
	Create, edit profiles	<input type="checkbox"/>	<input type="checkbox"/>	<input type="checkbox"/>
	Configure devices	<input checked="" type="checkbox"/>	<input type="checkbox"/>	<input type="checkbox"/>
	View Admin PINs	<input type="checkbox"/>	<input type="checkbox"/>	<input type="checkbox"/>
	View User/Recovery PINs	<input checked="" type="checkbox"/>	<input checked="" type="checkbox"/>	<input type="checkbox"/>
	View device settings	<input checked="" type="checkbox"/>	<input checked="" type="checkbox"/>	<input checked="" type="checkbox"/>
	View assigned-to	<input checked="" type="checkbox"/>	<input checked="" type="checkbox"/>	<input checked="" type="checkbox"/>
	Report device status - lost or stolen	<input checked="" type="checkbox"/>	<input checked="" type="checkbox"/>	<input checked="" type="checkbox"/>
	View Profiles	<input checked="" type="checkbox"/>	<input type="checkbox"/>	<input type="checkbox"/>
	Add/delete Users	<input type="checkbox"/>	<input type="checkbox"/>	<input type="checkbox"/>

DONE

Note: SuperAdmin has full rights





Security	Benefits
Secure Implementation	All data is encrypted and once a device has been configured, the Configuration pathway is locked down from the inside of the individual device by its firmware. For a device to be reconfigurable, it must be completely reset and returned to its "out of box" state.
Log Files	Create and maintain secure log files of User PINs, recovery PINs, and device settings created at time of configuration. Master Log File exists on centralized database and can be accessed via SSL from local workstations with access permission
Forced-Enrollment / User Forced Enrollment	Requires creation of a unique Admin PIN in configuration; additionally allows forced enrollment feature to be extended to User to create User PIN after device configuration
Multiple Admin Control	Unlimited number of Admins define and control heirarchal roles and permissions granted within designated groups in the organization
Compatible with Windows 7, 8 and 10 OS	Works with Microsoft Windows 7 and later
Features	Benefits
Multiple Drive Setup	Easily configure hundreds of devices simultaneously
Document Pre-Load Ability	Securely pre-load documents / data on drives being configured as part of the configuration process
Recovery PINs	4 one-time use PINs to recover Data in cases of forgotten User / Admin PINs
USB 3.0 Interface	Compatible with any computer USB port
Aluminum Enclosure	Rugged and Durable Hub Enclosure
Automatic PIN Generator	Automatically set random PIN numbers
Programmable Minimum / Maximum PIN Length	In conjunction with Auto PIN Generator, set PIN lengths to any number of characters between 7 and 16
Manage / Edit Master Profiles	Create profiles for groups of devices, edit master profiles, save variations
Apricorn Device Compatibility	All Aegis Secure Drives with "Configurable" C Logo on belly label
Box Contents	Configurator Software (USB Key), 10-port HUB, 5-AMP Power Supply, USB 3 Cable, Quick Start Guide
Specifications	
Interface	USB 2, 3.0, 3.1 gen 1
Dimensions & weight	size: 9.5" x 8 x 3.2 (with Hub) weight: 3 lbs.
Warranty	3-year limited
System Requirements	Windows 7, 8, 10; PC compatible computer with Pentium dual core CPU or newer, USB Port, 128MB available RAM, 100MB available space for program and log file
SQL Server Requirements	8GB for Databse, 4 CPU Cores, 8GB RAM, ≥ 20% of total physical RAM, RAID 10 Array, L2 cache per CPU ≥ 2MB, MAXDOP 1, Transactions / SEC: 37285
Ordering Information	USA Part Number: AP-CONFIG-CDB; EMEA Part Number: AP-CONFIG-CDB-EMEA